

Lower Thames Crossing

6.2 Environmental Statement Figures

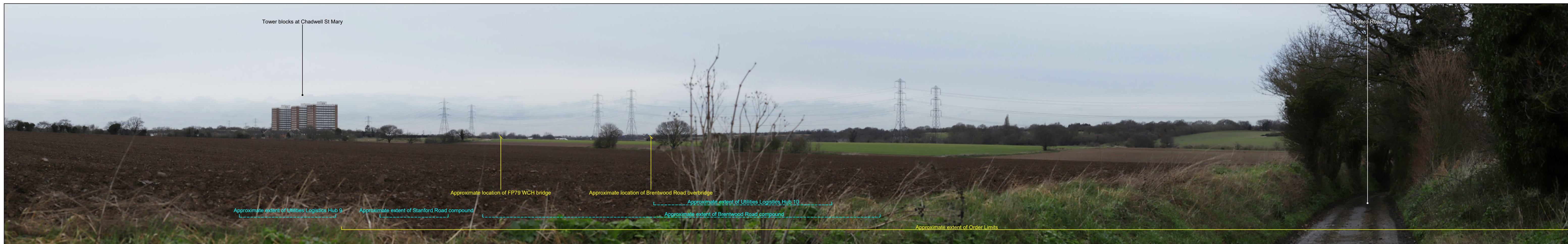
Figure 7.17 - Representative Viewpoints - Winter and Summer Views (5 of 8)

APFP Regulation 5(2)(a)
Infrastructure Planning
(Applications: Prescribed Forms and Procedure)
Regulations 2009
Volume 6

DATE: October 2022

Planning Inspectorate Scheme Ref: TR010032
Application Document Ref: TR010032/APP/6.2

VERSION: 1.0



Rev	Status	Rev. Date	Purpose of revision	Drawn	Chck'd	Apprv'd
P01	S8	05/08/2022	First Issued	BB	HP	SK

For location see Figure 7.16 - Visual Effects Drawing with Representative Viewpoint Locations

Camera: Canon EOS 6D MkII
 Lens: Canon EF 50mm f/1.8 STM
 Equipment: Manfrotto MA 454 Micro Positioning Plate
 Manfrotto SBH-100 Ball Head

Winter Viewpoint (Top): N-15
 Date and Time: 18/02/2019 16:29

FL, Max Aperture: 50mm, 1.75
 Tripod Height: 1.65m
 Viewpoint Ground Height: 20.8m AOD
 Viewpoint Grid Reference: 566019E, 179264N

Summer Viewpoint: N-15
 Date and Time: 03/06/2019 16:26

FL, Max Aperture: 50mm, 1.75
 Tripod Height: 1.65m
 Viewpoint Ground Height: 20.8m AOD
 Viewpoint Grid Reference: 566019E, 179264N

Distance to Order Limits: 0m
 View Direction (Centre of View): NNE
 GPS Accuracy: 5m



LOWER THAMES CROSSING
 5th Floor Beaufort House
 15 St Botolph Street
 London EC3A 7DT

Project: LOWER THAMES CROSSING
 Drawing title: Figure 7.17
 Representative Viewpoints - Winter and Summer Views
 Viewpoint N-15
 Sheet 1 of 2

Drawn	BB	Date	- 05/08/2022	Status	S8	Revision	P01
Checked	HP	Date	- 05/08/2022				
Approved	SK	Date	- 05/08/2022				
Drawing number				HE540039-CJV-ELS-SZP_ZZ000000_Z-DR-LV-00041			
Application Document No. TR010032/APP/6.2							



Rev	Status	Rev. Date	Purpose of revision	Drawn	Chck'd	Apprv'd
P01	S8	05/08/2022	First Issued	BB	HP	SK

For location see Figure 7.16 - Visual Effects Drawing with Representative Viewpoint Locations

Camera: Canon EOS 6D MkII
 Lens: Canon EF 50mm f/1.8 STM
 Equipment: Manfrotto MA 454 Micro Positioning Plate
 Manfrotto SBH-100 Ball Head

Winter Viewpoint (Top): N-15
 Date and Time: 18/02/2019 16:29

FL, Max Aperture: 50mm, 1.75
 Tripod Height: 1.65m
 Viewpoint Ground Height: 20.8m AOD
 Viewpoint Grid Reference: 566019E, 179264N

Distance to Order Limits: 0m
 View Direction (Centre of View): NNE
 GPS Accuracy: 5m

Summer Viewpoint: N-15
 Date and Time: 03/06/2019 16:26

FL, Max Aperture: 50mm, 1.75
 Tripod Height: 1.65m
 Viewpoint Ground Height: 20.8m AOD
 Viewpoint Grid Reference: 566019E, 179264N

Distance to Order Limits: 0m
 View Direction (Centre of View): NNE
 GPS Accuracy: 5m



LOWER THAMES CROSSING
 5th Floor Beaufort House
 15 St Botolph Street
 London EC3A 7DT

Project: LOWER THAMES CROSSING
 Drawing title: Figure 7.17
 Representative Viewpoints - Winter and Summer Views
 Viewpoint N-15
 Sheet 2 of 2

Drawn	BB	Date - 05/08/2022	Status	Revision
Checked	HP	Date - 05/08/2022	S8	P01
Approved	SK	Date - 05/08/2022	Application Document No. TR010032/APP/6.2	
Drawing number HE540039-CJV-ELS-SZP_ZZ000000_Z-DR-LV-00042				



Rev	Status	Rev. Date	Purpose of revision	Drawn	Chck'd	Apprv'd
P01	S8	05/08/2022	First Issued	BB	HP	SK

For location see Figure 7.16 - Visual Effects Drawing with Representative Viewpoint Locations

Camera: Canon EOS 6D MkII
 Lens: Canon EF 50mm f/1.8 STM
 Equipment: Manfrotto MA 454 Micro Positioning Plate
 Manfrotto SBH-100 Ball Head

Winter Viewpoint (Top): N-16
 Date and Time: 21/02/2019 08:41

FL, Max Aperture: 50mm, 1.75
 Tripod Height: 1.5m
 Viewpoint Ground Height: 6m AOD
 Viewpoint Grid Reference: 567992E, 181130N

Distance to Order Limits: 672m
 View Direction (Centre of View): SSW
 GPS Accuracy: 5m

Summer Viewpoint: N-16
 Date and Time: 06/06/2019 11:51

FL, Max Aperture: 50mm, 1.75
 Tripod Height: 1.5m
 Viewpoint Ground Height: 6m AOD
 Viewpoint Grid Reference: 567992E, 181130N

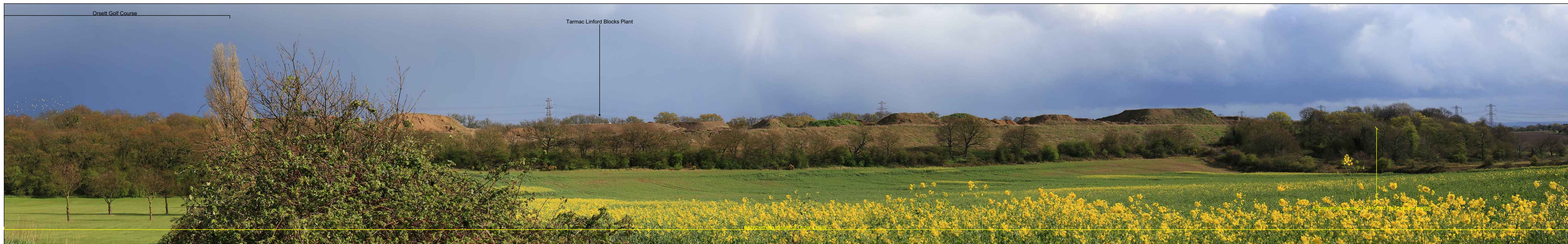
Distance to Order Limits: 672m
 View Direction (Centre of View): SSW
 GPS Accuracy: 5m



LOWER THAMES CROSSING
 5th Floor Beaufort House
 15 St Botolph Street
 London EC3A 7DT

Project: LOWER THAMES CROSSING
 Drawing title: Figure 7.17
 Representative Viewpoints - Winter and Summer Views
 Viewpoint N-16
 Sheet 1 of 1

Drawn	BB	Date - 05/08/2022	Status	Revision
Checked	HP	Date - 05/08/2022	S8	P01
Approved	SK	Date - 05/08/2022	Application Document No. TR010032/APP/6.2	
Drawing number		HE540039-CJV-ELS-SZP_ZZ000000_Z-DR-LV-00043		



Rev	Status	Rev. Date	Purpose of revision	Drawn	Chck'd	Apprv'd
P01	S8	05/08/2022	First Issued	BB	HP	SK

For location see Figure 7.16 - Visual Effects Drawing with Representative Viewpoint Locations		Winter Viewpoint (Top):	N-17
		Date and Time:	06/04/2022 15:34
Camera:	Canon EOS 6D MkII	FL, Max Aperture:	50mm, 1.75
Lens:	Canon EF 50mm f/1.8 STM	Tripod Height:	1.5m
Equipment:	Manfrotto MA 454 Micro Positioning Plate	Viewpoint Ground Height:	7.6m AOD
	Manfrotto SBH-100 Ball Head	Viewpoint Grid Reference:	566306E, 180393N

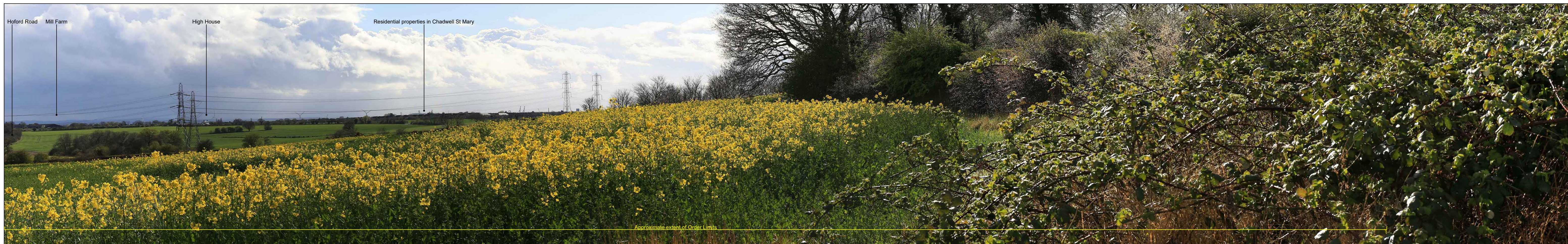
Summer Viewpoint:		N-17	
Date and Time:		14/06/2022 12:42	
FL, Max Aperture:	50mm, 1.75	Distance to Order Limits:	10m
Tripod Height:	1.5m	View Direction:	SSE
Viewpoint Ground Height:	7.6m AOD	(Centre of View):	SSE
Viewpoint Grid Reference:	566306E, 180393N	GPS Accuracy:	5m



LOWER THAMES CROSSING
 5th Floor Beaufort House
 15 St Botolph Street
 London EC3A 7DT

Project	LOWER THAMES CROSSING
Drawing title	Figure 7.17 Representative Viewpoints - Winter and Summer Views Viewpoint N-17 Sheet 1 of 2

Drawn	BB	Date	- 05/08/2022	Status	S8	Revision	P01
Checked	HP	Date	- 05/08/2022				
Approved	SK	Date	- 05/08/2022	Application Document No. TR010032/APP/6.2			
Drawing number		HE540039-CJV-ELS-SZP_ZZ000000_Z-DR-LV-00044					



P01	S8	05/08/2022	First Issued	BB	HP	SK
Rev	Status	Rev. Date	Purpose of revision	Drawn	Chck'd	Apprv'd

For location see Figure 7.16 - Visual Effects Drawing with Representative Viewpoint Locations

Camera: Canon EOS 6D MkII
 Lens: Canon EF 50mm f/1.8 STM
 Equipment: Manfrotto MA 454 Micro Positioning Plate
 Manfrotto SBH-100 Ball Head

Winter Viewpoint (Top): N-17
 Date and Time: 06/04/2022 15:34

FL, Max Aperture: 50mm, 1.75
 Tripod Height: 1.5m
 Viewpoint Ground Height: 7.6m AOD
 Viewpoint Grid Reference: 566306E, 180393N

Distance to Order Limits: 10m
 View Direction (Centre of View): SSE
 GPS Accuracy: 5m

Summer Viewpoint: N-17
 Date and Time: 14/06/2022 12:42

FL, Max Aperture: 50mm, 1.75
 Tripod Height: 1.5m
 Viewpoint Ground Height: 7.6m AOD
 Viewpoint Grid Reference: 566306E, 180393N

Distance to Order Limits: 10m
 View Direction (Centre of View): SSE
 GPS Accuracy: 5m



Client

LOWER THAMES CROSSING
 5th Floor Beaufort House
 15 St Botolph Street
 London EC3A 7DT

Project LOWER THAMES CROSSING

Drawing title Figure 7.17
 Representative Viewpoints - Winter and Summer Views
 Viewpoint N-17
 Sheet 2 of 2

Drawn	BB	Date - 05/08/2022	Status	Revision
Checked	HP	Date - 05/08/2022	S8	P01
Approved	SK	Date - 05/08/2022	Application Document No. TR010032/APP/6.2	
Drawing number		HE540039-CJV-ELS-SZP_ZZ000000_Z-DR-LV-00045		



Rev	Status	Rev. Date	Purpose of revision	Drawn	Chck'd	Apprv'd
P01	S8	05/08/2022	First Issued	BB	HP	SK

For location see Figure 7.16 - Visual Effects Drawing with Representative Viewpoint Locations

Camera: Canon EOS 6D MkII
 Lens: Canon EF 50mm f/1.8 STM
 Equipment: Manfrotto MA 454 Micro Positioning Plate
 Manfrotto SBH-100 Ball Head

Winter Viewpoint (Top): N-18
 Date and Time: 21/02/2019 11:49

FL, Max Aperture: 50mm, 1.75
 Tripod Height: 1.5m
 Viewpoint Ground Height: 30m AOD
 Viewpoint Grid Reference: 565221E, 179713N

Distance to Order Limits: 0m
 View Direction (Centre of View): NNE
 GPS Accuracy: 5m

Summer Viewpoint: N-18
 Date and Time: 03/06/2019 18:48

FL, Max Aperture: 50mm, 1.75
 Tripod Height: 1.5m
 Viewpoint Ground Height: 30m AOD
 Viewpoint Grid Reference: 565221E, 179713N

Distance to Order Limits: 0m
 View Direction (Centre of View): NNE
 GPS Accuracy: 5m



Client

LOWER THAMES CROSSING
 5th Floor Beaufort House
 15 St Botolph Street
 London EC3A 7DT

Project LOWER THAMES CROSSING

Drawing title Figure 7.17
 Representative Viewpoints - Winter and Summer Views
 Viewpoint N-18
 Sheet 1 of 2

Drawn	BB	Date - 05/08/2022	Status	Revision
Checked	HP	Date - 05/08/2022	S8	P01
Approved	SK	Date - 05/08/2022	Application Document No. TR010032/APP/6.2	
Drawing number HE540039-CJV-ELS-SZP_ZZ000000_Z-DR-LV-00046				



Rev	Status	Rev. Date	Purpose of revision	Drawn	Chck'd	Apprv'd
P01	S8	05/08/2022	First Issued	BB	HP	SK

For location see Figure 7.16 - Visual Effects Drawing with Representative Viewpoint Locations		Winter Viewpoint (Top): Date and Time:	N-18 21/02/2019 11:49	Summer Viewpoint: Date and Time:	N-18 03/06/2019 18:48	FL, Max Aperture: 50mm, 1.75	Distance to Order Limits: 0m	FL, Max Aperture: 50mm, 1.75	Distance to Order Limits: 0m
Camera: Canon EOS 6D MkII	Tripod Height: 1.5m	View Direction: (Centre of View):	NNE	Tripod Height: 1.5m	View Direction: (Centre of View):	NNE	Viewpoint Ground Height: 30m AOD	Viewpoint Ground Height: 30m AOD	View Direction: (Centre of View):
Equipment: Manfrotto MA 454 Micro Positioning Plate Manfrotto SBH-100 Ball Head	Viewpoint Grid Reference: 565221E, 179713N	GPS Accuracy: 5m		Viewpoint Grid Reference: 565221E, 179713N	GPS Accuracy: 5m				



Client
LOWER THAMES CROSSING
5th Floor Beaufort House
15 St Botolph Street
London EC3A 7DT

Project
LOWER THAMES CROSSING
Drawing title
Figure 7.17
Representative Viewpoints - Winter and Summer Views
Viewpoint N-18
Sheet 2 of 2

Drawn	BB	Date	- 05/08/2022	Status	S8	Revision	P01
Checked	HP	Date	- 05/08/2022	Application Document No. TR010032/APP/6.2			
Approved	SK	Date	- 05/08/2022	Drawing number HE540039-CJV-ELS-SZP_ZZ000000_Z-DR-LV-00047			



P01	S8	05/08/2022	First Issued	BB	HP	SK
Rev	Status	Rev. Date	Purpose of revision	Drawn	Chck'd	Apprv'd

For location see Figure 7.16 - Visual Effects Drawing with Representative Viewpoint Locations

Camera: Canon EOS 6D MkII
 Lens: Canon EF 50mm f/1.8 STM
 Equipment: Manfrotto MA 454 Micro Positioning Plate
 Manfrotto SBH-100 Ball Head

Winter Viewpoint (Top): N-19
 Date and Time: 21/02/2019 11:26

FL, Max Aperture: 50mm, 1.75
 Tripod Height: 1.5m
 Viewpoint Ground Height: 28.1m AOD
 Viewpoint Grid Reference: 564293E, 179661N

Distance to Order Limits: 250m
 View Direction (Centre of View): NNE
 GPS Accuracy: 5m

Summer Viewpoint: N-19
 Date and Time: 04/06/2019 09:03

FL, Max Aperture: 50mm, 1.75
 Tripod Height: 1.5m
 Viewpoint Ground Height: 28.1m AOD
 Viewpoint Grid Reference: 564293E, 179661N

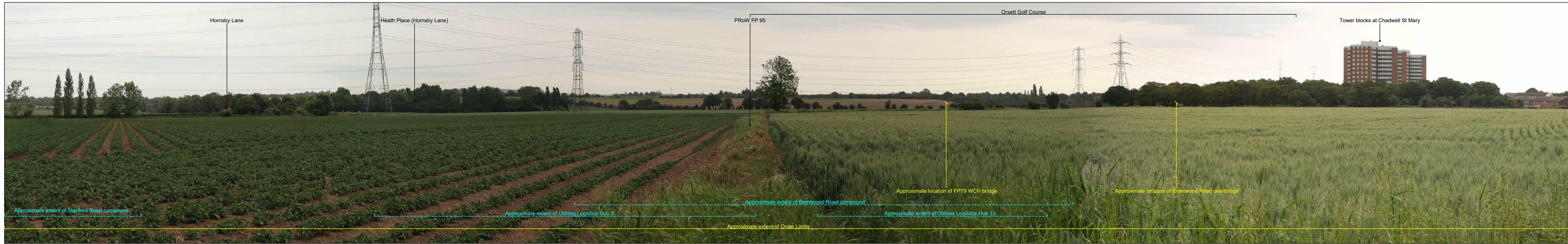
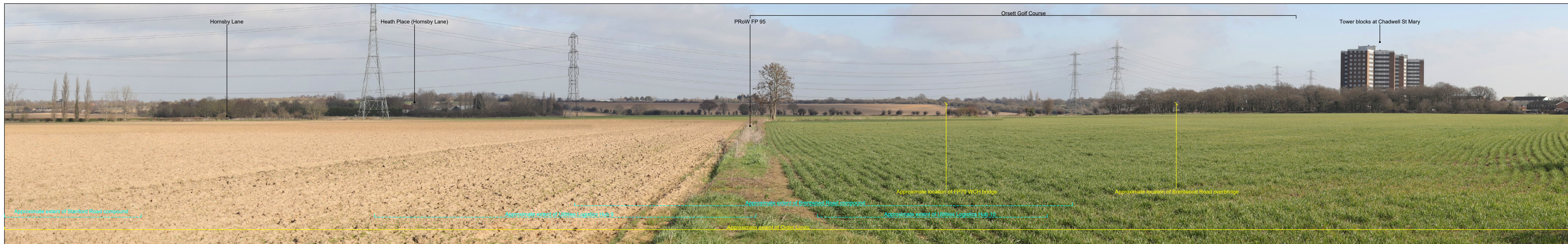
Distance to Order Limits: 250m
 View Direction (Centre of View): NNE
 GPS Accuracy: 5m



LOWER THAMES CROSSING
 5th Floor Beaufort House
 15 St Botolph Street
 London EC3A 7DT

Project: LOWER THAMES CROSSING
 Drawing title: Figure 7.17
 Representative Viewpoints - Winter and Summer Views
 Viewpoint N-19
 Sheet 1 of 2

Drawn	BB	Date - 05/08/2022	Status	Revision
Checked	HP	Date - 05/08/2022	S8	P01
Approved	SK	Date - 05/08/2022	Application Document No. TR010032/APP/6.2	
Drawing number HE540039-CJV-ELS-SZP_ZZ000000_Z-DR-LV-00048				



Rev	Status	Rev. Date	Purpose of revision	Drawn	Chk'd	Appr'd
P01	S8	05/08/2022	First Issued	BB	HP	SK

For location see Figure 7.16 - Visual Effects Drawing with Representative Viewpoint Locations		Winter Viewpoint (Top): N-19 Date and Time: 21/02/2019 11:26		Summer Viewpoint: N-19 Date and Time: 04/06/2019 09:03	
Camera:	Canon EOS 6D MkII	FL, Max Aperture:	50mm, 1.75	Distance to Order Limits:	250m
Lens:	Canon EF 50mm f/1.8 STM	Tripod Height:	1.5m	Tripod Height:	1.5m
Equipment:	Manfrotto MA 454 Micro Positioning Plate	Viewpoint Ground Height:	28.1m AOD	Viewpoint Ground Height:	28.1m AOD
	Manfrotto SBH-100 Ball Head	Viewpoint Grid Reference:	564293E, 179661N	Viewpoint Grid Reference:	564293E, 179661N
		View Direction (Centre of View):	NNE	View Direction (Centre of View):	NNE
		GPS Accuracy:	5m	GPS Accuracy:	5m



LOWER THAMES CROSSING
5th Floor Beaufort House
15 St Botolph Street
London EC3A 7DT

Project: LOWER THAMES CROSSING
Drawing title: Figure 7.17
Representative Viewpoints - Winter and Summer Views
Viewpoint N-19
Sheet 2 of 2

Drawn	BB	Date	-05/08/2022	Status	S8	Revision	P01
Checked	HP	Date	-05/08/2022	Application Document No. TR010032/APP/6.2			
Approved	SK	Date	-05/08/2022	Drawing number			
HE540039-CJV-ELS-SZP_ZZ000000_Z-DR-LV-00049							



P01	S8	05/08/2022	First Issued	BB	HP	SK
Rev	Status	Rev. Date	Purpose of revision	Drawn	Chck'd	Apprv'd

For location see Figure 7.16 - Visual Effects Drawing with Representative Viewpoint Locations

Camera: Canon EOS 6D MkII
 Lens: Canon EF 50mm f/1.8 STM
 Equipment: Manfrotto MA 454 Micro Positioning Plate
 Manfrotto SBH-100 Ball Head

Winter Viewpoint (Top): N-20
 Date and Time: 19/04/2022 09:42

FL, Max Aperture: 50mm, 1.75
 Tripod Height: 1.5m
 Viewpoint Ground Height: 61.5m AOD
 Viewpoint Grid Reference: 564390E, 180224N

Distance to Order Limits: 0m
 View Direction (Centre of View): WSW
 GPS Accuracy: 5m

Summer Viewpoint: N-20
 Date and Time: 14/06/2022 13:08

FL, Max Aperture: 50mm, 1.75
 Tripod Height: 1.5m
 Viewpoint Ground Height: 61.5m AOD
 Viewpoint Grid Reference: 564390E, 180224N

Distance to Order Limits: 0m
 View Direction (Centre of View): WSW
 GPS Accuracy: 5m



LOWER THAMES CROSSING
 5th Floor Beaufort House
 15 St Botolph Street
 London EC3A 7DT

Project: LOWER THAMES CROSSING
 Drawing title: Figure 7.17
 Representative Viewpoints - Winter and Summer Views
 Viewpoint N-20
 Sheet 1 of 2

Drawn	BB	Date - 05/08/2022	Status	Revision
Checked	HP	Date - 05/08/2022	S8	P01
Approved	SK	Date - 05/08/2022	Application Document No. TR010032/APP/6.2	
Drawing number		HE540039-CJV-ELS-SZP_ZZ000000_Z-DR-LV-00052		



P01	S8	05/08/2022	First Issued	BB	HP	SK
Rev	Status	Rev. Date	Purpose of revision	Drawn	Chck'd	Apprv'd

For location see Figure 7.16 - Visual Effects Drawing with Representative Viewpoint Locations

Camera: Canon EOS 6D MkII
 Lens: Canon EF 50mm f/1.8 STM
 Equipment: Manfrotto MA 454 Micro Positioning Plate
 Manfrotto SBH-100 Ball Head

Winter Viewpoint (Top): N-20
 Date and Time: 19/04/2022 09:42

FL, Max Aperture: 50mm, 1.75
 Tripod Height: 1.5m
 Viewpoint Ground Height: 61.5m AOD
 Viewpoint Grid Reference: 564390E, 180224N

Distance to Order Limits: 0m
 View Direction (Centre of View): WSW
 GPS Accuracy: 5m

Summer Viewpoint: N-20
 Date and Time: 14/06/2022 13:08

FL, Max Aperture: 50mm, 1.75
 Tripod Height: 1.5m
 Viewpoint Ground Height: 61.5m AOD
 Viewpoint Grid Reference: 564390E, 180224N

Distance to Order Limits: 0m
 View Direction (Centre of View): WSW
 GPS Accuracy: 5m



Client

LOWER THAMES CROSSING
 5th Floor Beaufort House
 15 St Botolph Street
 London EC3A 7DT

Project LOWER THAMES CROSSING

Drawing title Figure 7.17
 Representative Viewpoints - Winter and Summer Views
 Viewpoint N-20
 Sheet 2 of 2

Drawn	BB	Date - 05/08/2022	Status	Revision
Checked	HP	Date - 05/08/2022	S8	P01
Approved	SK	Date - 05/08/2022	Application Document No. TR010032/APP/6.2	
Drawing number		HE540039-CJV-ELS-SZP_ZZ000000_Z-DR-LV-00053		



P01	S8	05/08/2022	First Issued	BB	HP	SK
Rev	Status	Rev. Date	Purpose of revision	Drawn	Chck'd	Apprv'd

For location see Figure 7.16 - Visual Effects Drawing with Representative Viewpoint Locations		Winter Viewpoint (Top): N-21 Date and Time: 21/02/2019 09:52		Summer Viewpoint: N-21 Date and Time: 04/06/2019 09:44	
Camera:	Canon EOS 6D MkII	FL, Max Aperture:	50mm, 1.75	Distance to Order Limits:	0m
Lens:	Canon EF 50mm f/1.8 STM	Tripod Height:	1.5m	View Direction:	SSW
Equipment:	Manfrotto MA 454 Micro Positioning Plate	Viewpoint Ground Height:	25.1m AOD	(Centre of View):	SSW
	Manfrotto SBH-100 Ball Head	Viewpoint Grid Reference:	564385E, 180736N	GPS Accuracy:	5m
				Viewpoint Grid Reference:	564385E, 180736N



LOWER THAMES CROSSING
 5th Floor Beaufort House
 15 St Botolph Street
 London EC3A 7DT

Project: LOWER THAMES CROSSING
 Drawing title: Figure 7.17
 Representative Viewpoints - Winter and Summer Views
 Viewpoint N-21
 Sheet 1 of 3

Drawn	BB	Date	- 05/08/2022	Status	S8	Revision	P01
Checked	HP	Date	- 05/08/2022	Application Document No. TR010032/APP/6.2			
Approved	SK	Date	- 05/08/2022				
Drawing number HE540039-CJV-ELS-SZP_ZZ000000_Z-DR-LV-00055							



P01	S8	05/08/2022	First Issued	BB	HP	SK
Rev	Status	Rev. Date	Purpose of revision	Drawn	Chck'd	Apprv'd

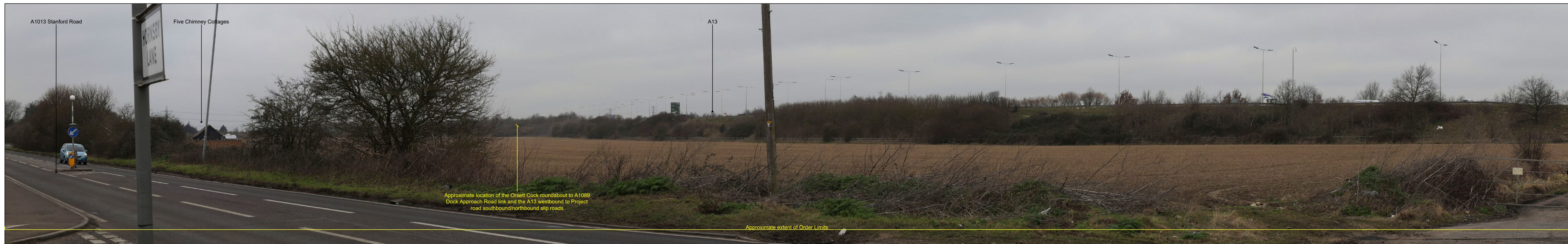
For location see Figure 7.16 - Visual Effects Drawing with Representative Viewpoint Locations		Winter Viewpoint (Top): Date and Time: N-21 21/02/2019 09:52	Summer Viewpoint: Date and Time: N-21 04/06/2019 09:44
Camera: Canon EOS 6D MkII	FL, Max Aperture: 50mm, 1.75	Distance to Order Limits: 0m	FL, Max Aperture: 50mm, 1.75
Lens: Canon EF 50mm f/1.8 STM	Tripod Height: 1.5m	View Direction: SSW	Tripod Height: 1.5m
Equipment: Manfrotto MA 454 Micro Positioning Plate	Viewpoint Ground Height: 25.1m AOD	(Centre of View): SSW	Viewpoint Ground Height: 25.1m AOD
Manfrotto SBH-100 Ball Head	Viewpoint Grid Reference: 564385E, 180736N	GPS Accuracy: 5m	Viewpoint Grid Reference: 564385E, 180736N
		Distance to Order Limits: 0m	View Direction: SSW
			GPS Accuracy: 5m



LOWER THAMES CROSSING
5th Floor Beaufort House
15 St Botolph Street
London EC3A 7DT

Project LOWER THAMES CROSSING
Drawing title Figure 7.17
Representative Viewpoints - Winter and Summer Views
Viewpoint N-21
Sheet 2 of 3

Drawn	BB	Date - 05/08/2022	Status	Revision
Checked	HP	Date - 05/08/2022	S8	P01
Approved	SK	Date - 05/08/2022	Application Document No. TR010032/APP/6.2	
Drawing number		HE540039-CJV-ELS-SZP_ZZ000000_Z-DR-LV-00056		



P01	S8	05/08/2022	First Issued	BB	HP	SK
Rev	Status	Rev. Date	Purpose of revision	Drawn	Chck'd	Apprv'd

For location see Figure 7.16 - Visual Effects Drawing with Representative Viewpoint Locations

Camera: Canon EOS 6D MkII
 Lens: Canon EF 50mm f/1.8 STM
 Equipment: Manfrotto MA 454 Micro Positioning Plate
 Manfrotto SBH-100 Ball Head

Winter Viewpoint (Top): N-21
 Date and Time: 21/02/2019 09:52

FL, Max Aperture: 50mm, 1.75
 Tripod Height: 1.5m
 Viewpoint Ground Height: 25.1m AOD
 Viewpoint Grid Reference: 564385E, 180736N

Distance to Order Limits: 0m
 View Direction (Centre of View): SSW
 GPS Accuracy: 5m

Summer Viewpoint: N-21
 Date and Time: 04/06/2019 09:44

FL, Max Aperture: 50mm, 1.75
 Tripod Height: 1.5m
 Viewpoint Ground Height: 25.1m AOD
 Viewpoint Grid Reference: 564385E, 180736N

Distance to Order Limits: 0m
 View Direction (Centre of View): SSW
 GPS Accuracy: 5m



Client

LOWER THAMES CROSSING

5th Floor Beaufort House
 15 St Botolph Street
 London EC3A 7DT

Project

LOWER THAMES CROSSING

Drawing title

Figure 7.17
 Representative Viewpoints - Winter and Summer Views
 Viewpoint N-21
 Sheet 3 of 3

Drawn	BB	Date - 05/08/2022	Status	Revision
Checked	HP	Date - 05/08/2022	S8	P01
Approved	SK	Date - 05/08/2022	Application Document No. TR010032/APP/6.2	
Drawing number		HE540039-CJV-ELS-SZP_ZZ000000_Z-DR-LV-00057		



Rev	Status	Rev. Date	Purpose of revision	Drawn	Chck'd	Apprv'd
P01	S8	05/08/2022	First Issued	BB	HP	SK

For location see Figure 7.16 - Visual Effects Drawing with Representative Viewpoint Locations

Camera: Canon EOS 6D MkII
 Lens: Canon EF 50mm f/1.8 STM
 Equipment: Manfrotto MA 454 Micro Positioning Plate
 Manfrotto SBH-100 Ball Head

Winter Viewpoint (Top):
 Date and Time: N-22 21/02/2019 10:07

FL, Max Aperture: 50mm, 1.75
 Tripod Height: 1.5m
 Viewpoint Ground Height: 34.2m AOD
 Viewpoint Grid Reference: 563672E, 180275N

Distance to Order Limits: 0m
 View Direction (Centre of View): NE
 GPS Accuracy: 5m

Summer Viewpoint:
 Date and Time: N-22 04/06/2019 10:03

FL, Max Aperture: 50mm, 1.75
 Tripod Height: 1.5m
 Viewpoint Ground Height: 34.2m AOD
 Viewpoint Grid Reference: 563672E, 180275N

Distance to Order Limits: 0m
 View Direction (Centre of View): NE
 GPS Accuracy: 5m



LOWER THAMES CROSSING
 5th Floor Beaufort House
 15 St Botolph Street
 London EC3A 7DT

Project: LOWER THAMES CROSSING
 Drawing title: Figure 7.17
 Representative Viewpoints - Winter and Summer Views
 Viewpoint N-22
 Sheet 1 of 3

Drawn	BB	Date	- 05/08/2022	Status	S8	Revision	P01
Checked	HP	Date	- 05/08/2022	Application Document No. TR010032/APP/6.2			
Approved	SK	Date	- 05/08/2022	Drawing number			
HE540039-CJV-ELS-SZP_ZZ000000_Z-DR-LV-00058							



Rev	Status	Rev. Date	Purpose of revision	Drawn	Chck'd	Apprv'd
P01	S8	05/08/2022	First Issued	BB	HP	SK

For location see Figure 7.16 - Visual Effects Drawing with Representative Viewpoint Locations

Winter Viewpoint (Top):
 Date and Time: N-22 21/02/2019 10:07
 FL, Max Aperture: 50mm, 1.75
 Tripod Height: 1.5m
 Viewpoint Ground Height: 34.2m AOD
 Viewpoint Grid Reference: 563672E, 180275N

Summer Viewpoint:
 Date and Time: N-22 04/06/2019 10:03
 FL, Max Aperture: 50mm, 1.75
 Tripod Height: 1.5m
 Viewpoint Ground Height: 34.2m AOD
 Viewpoint Grid Reference: 563672E, 180275N

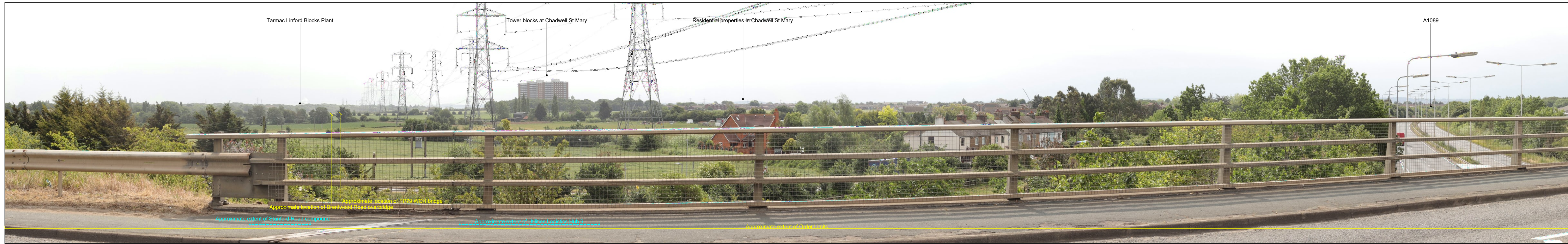
Distance to Order Limits: 0m
 View Direction (Centre of View): NE
 GPS Accuracy: 5m



LOWER THAMES CROSSING
 5th Floor Beaufort House
 15 St Botolph Street
 London EC3A 7DT

Project: LOWER THAMES CROSSING
 Drawing title: Figure 7.17
 Representative Viewpoints - Winter and Summer Views
 Viewpoint N-22
 Sheet 2 of 3

Drawn	BB	Date	- 05/08/2022	Status	S8	Revision	P01
Checked	HP	Date	- 05/08/2022	Application Document No. TR010032/APP/6.2			
Approved	SK	Date	- 05/08/2022	Drawing number			
HE540039-CJV-ELS-SZP_ZZ000000_Z-DR-LV-00059							



P01	S8	05/08/2022	First Issued	BB	HP	SK
Rev	Status	Rev. Date	Purpose of revision	Drawn	Chck'd	Apprv'd

For location see Figure 7.16 - Visual Effects Drawing with Representative Viewpoint Locations

Camera: Canon EOS 6D MkII
 Lens: Canon EF 50mm f/1.8 STM
 Equipment: Manfrotto MA 454 Micro Positioning Plate
 Manfrotto SBH-100 Ball Head

Winter Viewpoint (Top): N-22
 Date and Time: 21/02/2019 10:07

FL, Max Aperture: 50mm, 1.75
 Tripod Height: 1.5m
 Viewpoint Ground Height: 34.2m AOD
 Viewpoint Grid Reference: 563672E, 180275N

Summer Viewpoint: N-22
 Date and Time: 04/06/2019 10:03

FL, Max Aperture: 50mm, 1.75
 Tripod Height: 1.5m
 Viewpoint Ground Height: 34.2m AOD
 Viewpoint Grid Reference: 563672E, 180275N

Client

LOWER THAMES CROSSING
 5th Floor Beaufort House
 15 St Botolph Street
 London EC3A 7DT

Project: LOWER THAMES CROSSING
 Drawing title: Figure 7.17
 Representative Viewpoints - Winter and Summer Views
 Viewpoint N-22
 Sheet 3 of 3

Drawn	BB	Date - 05/08/2022	Status	Revision
Checked	HP	Date - 05/08/2022	S8	P01
Approved	SK	Date - 05/08/2022	Application Document No. TR010032/APP/6.2	
Drawing number HE540039-CJV-ELS-SZP_ZZ000000_Z-DR-LV-00060				



Rev	Status	Rev. Date	Purpose of revision	Drawn	Chck'd	Apprv'd
P01	S8	05/08/2022	First Issued	BB	HP	SK

For location see Figure 7.16 - Visual Effects Drawing with Representative Viewpoint Locations

Camera: Canon EOS 6D MkII
 Lens: Canon EF 50mm f/1.8 STM
 Equipment: Manfrotto MA 454 Micro Positioning Plate
 Manfrotto SBH-100 Ball Head

Winter Viewpoint (Top): N-23
 Date and Time: 21/02/2019 10:43

FL, Max Aperture: 50mm, 1.75
 Tripod Height: 1.5m
 Viewpoint Ground Height: 25.4m AOD
 Viewpoint Grid Reference: 562928E, 180292N

Distance to Order Limits: 0m
 View Direction (Centre of View): ENE
 GPS Accuracy: 5m

Summer Viewpoint: N-23
 Date and Time: 04/06/2019 10:47

FL, Max Aperture: 50mm, 1.75
 Tripod Height: 1.5m
 Viewpoint Ground Height: 25.4m AOD
 Viewpoint Grid Reference: 562928E, 180292N

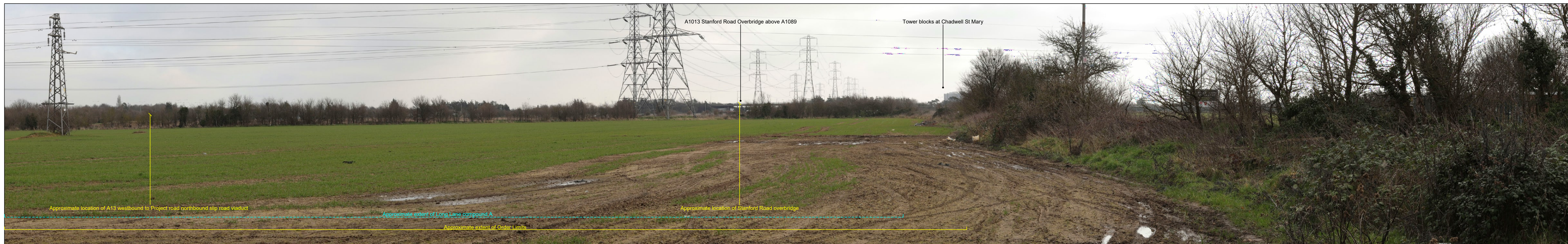
Distance to Order Limits: 0m
 View Direction (Centre of View): ENE
 GPS Accuracy: 5m



LOWER THAMES CROSSING
 5th Floor Beaufort House
 15 St Botolph Street
 London EC3A 7DT

Project: LOWER THAMES CROSSING
 Drawing title: Figure 7.17
 Representative Viewpoints - Winter and Summer Views
 Viewpoint N-23
 Sheet 1 of 2

Drawn	BB	Date - 05/08/2022	Status	Revision
Checked	HP	Date - 05/08/2022	S8	P01
Approved	SK	Date - 05/08/2022	Application Document No. TR010032/APP/6.2	
Drawing number		HE540039-CJV-ELS-SZP_ZZ000000_Z-DR-LV-00061		



P01	S8	05/08/2022	First Issued	BB	HP	SK
Rev	Status	Rev. Date	Purpose of revision	Drawn	Chck'd	Apprv'd

For location see Figure 7.16 - Visual Effects Drawing with Representative Viewpoint Locations

Camera: Canon EOS 6D MkII
 Lens: Canon EF 50mm f/1.8 STM
 Equipment: Manfrotto MA 454 Micro Positioning Plate
 Manfrotto SBH-100 Ball Head

Winter Viewpoint (Top): N-23
 Date and Time: 21/02/2019 10:43

FL, Max Aperture: 50mm, 1.75
 Tripod Height: 1.5m
 Viewpoint Ground Height: 25.4m AOD
 Viewpoint Grid Reference: 562928E, 180292N

Distance to Order Limits: 0m
 View Direction (Centre of View): ENE
 GPS Accuracy: 5m

Summer Viewpoint: N-23
 Date and Time: 04/06/2019 10:47

FL, Max Aperture: 50mm, 1.75
 Tripod Height: 1.5m
 Viewpoint Ground Height: 25.4m AOD
 Viewpoint Grid Reference: 562928E, 180292N

Distance to Order Limits: 0m
 View Direction (Centre of View): ENE
 GPS Accuracy: 5m



LOWER THAMES CROSSING
 5th Floor Beaufort House
 15 St Botolph Street
 London EC3A 7DT

Project: LOWER THAMES CROSSING
 Drawing title: Figure 7.17
 Representative Viewpoints - Winter and Summer Views
 Viewpoint N-23
 Sheet 2 of 2

Drawn	BB	Date - 05/08/2022	Status	Revision
Checked	HP	Date - 05/08/2022	S8	P01
Approved	SK	Date - 05/08/2022	Application Document No. TR010032/APP/6.2	
Drawing number		HE540039-CJV-ELS-SZP_ZZ000000_Z-DR-LV-00062		



Rev	Status	Rev. Date	Purpose of revision	Drawn	Chck'd	Apprv'd
P01	S8	05/08/2022	First Issued	BB	HP	SK

For location see Figure 7.16 - Visual Effects Drawing with Representative Viewpoint Locations

Camera: Canon EOS 6D MkII
 Lens: Canon EF 50mm f/1.8 STM
 Equipment: Manfrotto MA 454 Micro Positioning Plate
 Manfrotto SBH-100 Ball Head

Winter Viewpoint (Top): N-24
 Date and Time: 21/02/2019 11:05

FL, Max Aperture: 50mm, 1.75
 Tripod Height: 1.5m
 Viewpoint Ground Height: 40.8m AOD
 Viewpoint Grid Reference: 563502E, 181051N

Distance to Order Limits: 3m
 View Direction (Centre of View): SSE
 GPS Accuracy: 5m

Summer Viewpoint: N-24
 Date and Time: 04/06/2019 11:22

FL, Max Aperture: 50mm, 1.75
 Tripod Height: 1.5m
 Viewpoint Ground Height: 40.8m AOD
 Viewpoint Grid Reference: 563502E, 181051N

Distance to Order Limits: 3m
 View Direction (Centre of View): SSE
 GPS Accuracy: 5m



LOWER THAMES CROSSING
 5th Floor Beaufort House
 15 St Botolph Street
 London EC3A 7DT

Project: LOWER THAMES CROSSING
 Drawing title: Figure 7.17
 Representative Viewpoints - Winter and Summer Views
 Viewpoint N-24
 Sheet 1 of 1

Drawn	BB	Date - 05/08/2022	Status	Revision
Checked	HP	Date - 05/08/2022	S8	P01
Approved	SK	Date - 05/08/2022	Application Document No. TR010032/APP/6.2	
Drawing number		HE540039-CJV-ELS-SZP_ZZ000000_Z-DR-LV-00063		



P01	S8	05/08/2022	First Issued	BB	HP	SK
Rev	Status	Rev. Date	Purpose of revision	Drawn	Chck'd	Apprv'd

For location see Figure 7.16 - Visual Effects Drawing with Representative Viewpoint Locations

Winter Viewpoint (Top): N-25
Date and Time: 21/02/2019 09:34

Camera: Canon EOS 6D MkII
Lens: Canon EF 50mm f/1.8 STM
Equipment: Manfrotto MA 454 Micro Positioning Plate
Manfrotto SBH-100 Ball Head

FL, Max Aperture: 50mm, 1.75
Tripod Height: 1.65m
Viewpoint Ground Height: 38.5m AOD
Viewpoint Grid Reference: 564161E, 181382N

Distance to Order Limits: 50m
View Direction (Centre of View): SW
GPS Accuracy: 5m

Summer Viewpoint: N-25
Date and Time: 05/06/2019 18:04

FL, Max Aperture: 50mm, 1.75
Tripod Height: 1.65m
Viewpoint Ground Height: 38.5m AOD
Viewpoint Grid Reference: 564161E, 181382N

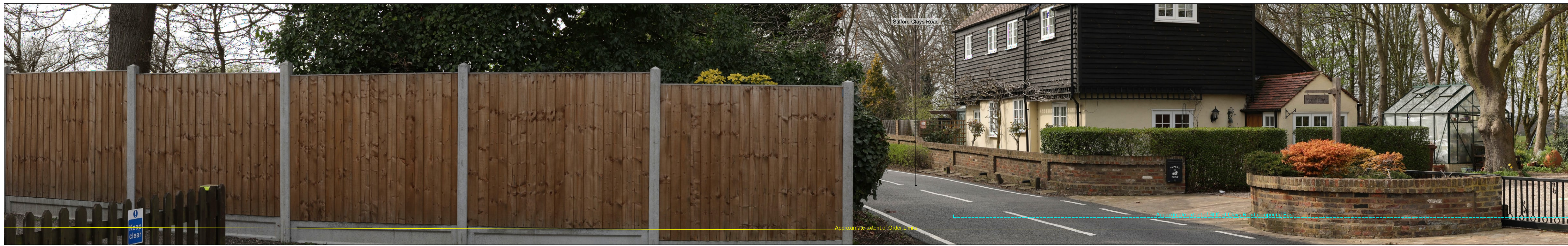
Distance to Order Limits: 50m
View Direction (Centre of View): SW
GPS Accuracy: 5m



LOWER THAMES CROSSING
5th Floor Beaufort House
15 St Botolph Street
London EC3A 7DT

Project: LOWER THAMES CROSSING
Drawing title: Figure 7.17
Representative Viewpoints - Winter and Summer Views
Viewpoint N-25
Sheet 1 of 1

Drawn	BB	Date - 05/08/2022	Status	Revision
Checked	HP	Date - 05/08/2022	S8	P01
Approved	SK	Date - 05/08/2022	Application Document No. TR010032/APP/6.2	
Drawing number HE540039-CJV-ELS-SZP_ZZ000000_Z-DR-LV-00064				



Rev	Status	Rev. Date	Purpose of revision	Drawn	Chck'd	Apprv'd
P01	S8	05/08/2022	First Issued	BB	HP	SK

For location see Figure 7.16 - Visual Effects Drawing with Representative Viewpoint Locations

Camera: Canon EOS 6D MkII
 Lens: Canon EF 50mm f/1.8 STM
 Equipment: Manfrotto MA 454 Micro Positioning Plate
 Manfrotto SBH-100 Ball Head

Winter Viewpoint (Top): N-26
 Date and Time: 28/03/2019 13:52

FL, Max Aperture: 50mm, 1.75
 Tripod Height: 1.5m
 Viewpoint Ground Height: 17.6m AOD
 Viewpoint Grid Reference: 563245E, 181401N

Distance to Order Limits: 1m
 View Direction (Centre of View): NW
 GPS Accuracy: 5m

Summer Viewpoint: N-26
 Date and Time: 04/06/2019 11:54

FL, Max Aperture: 50mm, 1.75
 Tripod Height: 1.5m
 Viewpoint Ground Height: 17.6m AOD
 Viewpoint Grid Reference: 563245E, 181401N

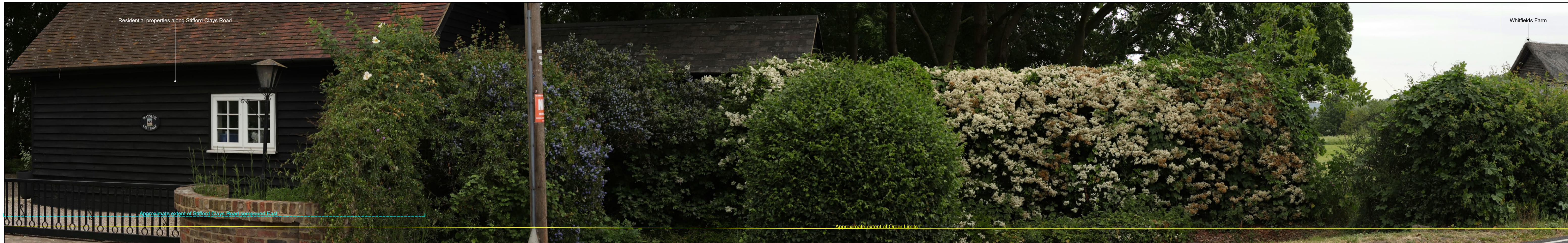
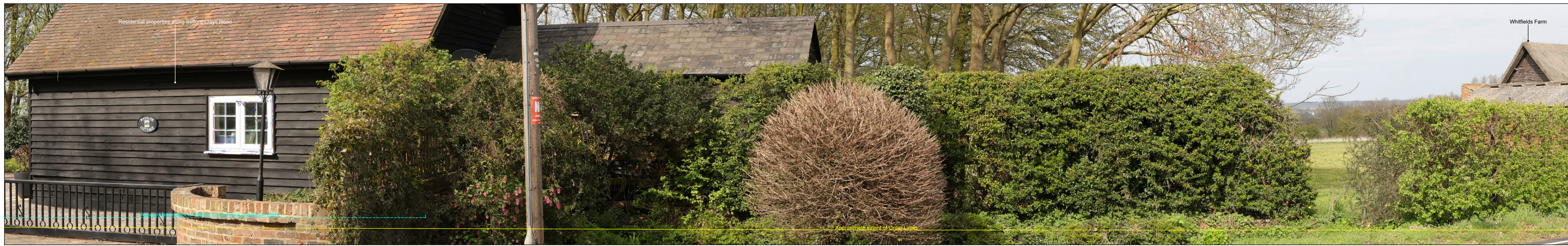
Distance to Order Limits: 1m
 View Direction (Centre of View): NW
 GPS Accuracy: 5m



LOWER THAMES CROSSING
 5th Floor Beaufort House
 15 St Botolph Street
 London EC3A 7DT

Project: LOWER THAMES CROSSING
 Drawing title: Figure 7.17
 Representative Viewpoints - Winter and Summer Views
 Viewpoint N-26
 Sheet 1 of 2

Drawn	BB	Date	- 05/08/2022	Status	S8	Revision	P01
Checked	HP	Date	- 05/08/2022	Application Document No. TR010032/APP/6.2			
Approved	SK	Date	- 05/08/2022	Drawing number			
HE540039-CJV-ELS-SZP_ZZ000000_Z-DR-LV-00065				HE540039-CJV-ELS-SZP_ZZ000000_Z-DR-LV-00065.dwg			



Rev	Status	Rev. Date	Purpose of revision	Drawn	Chck'd	Apprv'd
P01	S8	05/08/2022	First Issued	BB	HP	SK

For location see Figure 7.16 - Visual Effects Drawing with Representative Viewpoint Locations

Camera: Canon EOS 6D MkII
 Lens: Canon EF 50mm f/1.8 STM
 Equipment: Manfrotto MA 454 Micro Positioning Plate
 Manfrotto SBH-100 Ball Head

Winter Viewpoint (Top): N-26
 Date and Time: 28/03/2019 13:52

FL, Max Aperture: 50mm, 1.75
 Tripod Height: 1.5m
 Viewpoint Ground Height: 17.6m AOD
 Viewpoint Grid Reference: 563245E, 181401N

Distance to Order Limits: 1m
 View Direction (Centre of View): NW
 GPS Accuracy: 5m

Summer Viewpoint: N-26
 Date and Time: 04/06/2019 11:54

FL, Max Aperture: 50mm, 1.75
 Tripod Height: 1.5m
 Viewpoint Ground Height: 17.6m AOD
 Viewpoint Grid Reference: 563245E, 181401N

Distance to Order Limits: 1m
 View Direction (Centre of View): NW
 GPS Accuracy: 5m



LOWER THAMES CROSSING
 5th Floor Beaufort House
 15 St Botolph Street
 London EC3A 7DT

Project: LOWER THAMES CROSSING
 Drawing title: Figure 7.17
 Representative Viewpoints - Winter and Summer Views
 Viewpoint N-26
 Sheet 2 of 2

Drawn	BB	Date - 05/08/2022	Status	Revision
Checked	HP	Date - 05/08/2022	S8	P01
Approved	SK	Date - 05/08/2022	Application Document No. TR010032/APP/6.2	
Drawing number HE540039-CJV-ELS-SZP_ZZ000000_Z-DR-LV-00066				

If you need help accessing this or any other National Highways information, please call **0300 123 5000** and we will help you.

© Crown copyright 2022.

You may re-use this information (not including logos) free of charge in any format or medium, under the terms of the Open Government Licence. To view this licence:

visit www.nationalarchives.gov.uk/doc/open-government-licence/

write to the **Information Policy Team, The National Archives, Kew, London TW9 4DU**, or email psi@nationalarchives.gsi.gov.uk.

Mapping (where present): © Crown copyright and database rights 2022 OS 100030649. You are permitted to use this data solely to enable you to respond to, or interact with, the organisation that provided you with the data. You are not permitted to copy, sub-license, distribute or sell any of this data to third parties in any form.

If you have any enquiries about this publication email info@nationalhighways.co.uk or call **0300 123 5000***.

*Calls to 03 numbers cost no more than a national rate call to an 01 or 02 number and must count towards any inclusive minutes in the same way as 01 and 02 calls. These rules apply to calls from any type of line including mobile, BT, other fixed line or payphone. Calls may be recorded or monitored.

Printed on paper from well-managed forests and other controlled sources when issued directly by National Highways.

Registered office Bridge House, 1 Walnut Tree Close, Guildford GU1 4LZ

National Highways Company Limited registered in England and Wales number 09346363